

NON-REFILLABLE CYLINDERS REFRIGERANT



STANDARD SPECIFICATIONS

MODEL	7.5 INCH	9.5 INCH	12 INCH
HEIGHT (IN)	14.6	16.4	17.6
WATER CAPACITY (LBS)	15.8	29.7	49.6
DIAMETER (IN)	7.5	9.5	12
CYLINDER VOLUME (CU. IN)	438	822	1,378
STANDARD SPECIFICATION	DOT - 39	DOT - 39	DOT - 39
SERVICE PRESSURE (PSIG)	260 400	260 300 400	260 320
TEST PRESSURE (PSIG)	325 500	325 400 500	325 400

All dimensions are approximate.
Recommended service pressure is dependent on gas type.



Features

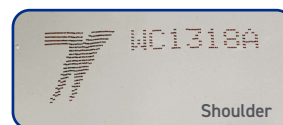
- Rounded edges for safe handling
- Comfort grip for improved handling
- Arched design for light weight, enhanced durability and increased strength
- Wide 3.2" opening for easy valve access and filling

Pressure Relief Devices

All cylinders are made to DOT-39 specifications.

Stamps Of Authenticity

Guaranteed Quality. Guaranteed Worthington.



Container Color Guidelines

Worthington complies with AHRI Guideline N which states all refrigerant containers will be painted PMS 413. Per SAE, containers with R-134a Automotive will remain PMS 2975. Containers for flammable refrigerant will have a red band on the shoulder.

CONTACT US:

200 OLD WILSON BRIDGE ROAD
COLUMBUS, OHIO 43085 USA
P: +1 614.438.3013

TOLL-FREE: 866.928.2657
CYLINDERS@WORTHINGTONINDUSTRIES.COM
WORTHINGTONINDUSTRIES.COM/REFRIGERANTS

MAKERS OF BETTER

NON-REFILLABLE CYLINDERS

REFRIGERANT



METRIC SPECIFICATIONS

MODEL	7.5 INCH	9.5 INCH	12 INCH
HEIGHT (MM)	396.8	416.7	446
WATER CAPACITY (KG)	7.04	13.2	22.1
DIAMETER (MM)	190.5	241.3	304.8
CYLINDER VOLUME (L)	7.2	13.5	22.5
STANDARD SPECIFICATION	DOT - 39	DOT - 39	DOT - 39
SERVICE PRESSURE (BAR)	17.9 27.6	17.9 20.7 27.6	17.9 22.1
TEST PRESSURE (BAR)	23 34.5	23 27.6 34.5	23 27.6

All dimensions are approximate.
Recommended service pressure is dependent on gas type.



Features

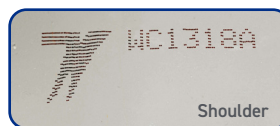
- Rounded edges for safe handling
- Comfort grip for improved handling
- Arched design for light weight, enhanced durability and increased strength
- Wide 3.2" opening for easy valve access and filling

Pressure Relief Devices

All cylinders are made to DOT-39 specifications.

Stamps Of Authenticity

Guaranteed Quality. Guaranteed Worthington.



Container Color Guidelines

Worthington complies with AHRI Guideline N which states all refrigerant containers will be painted PMS 413. Per SAE, containers with R-134a Automotive will remain PMS 2975. Containers for flammable refrigerant will have a red band on the shoulder.

CONTACT US:

200 OLD WILSON BRIDGE ROAD
COLUMBUS, OHIO 43085 USA
P: +1 614.438.3013

TOLL-FREE: 866.928.2657
CYLINDERS@WORTHINGTONINDUSTRIES.COM
WORTHINGTONINDUSTRIES.COM/REFRIGERANTS

MAKERS OF BETTER