



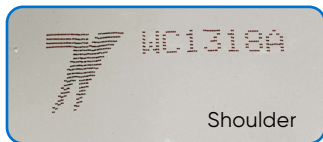
STANDARD SPECIFICATIONS

Model/Size	7.5 INCH	9.5 INCH	12 INCH
Height (in)	14.6	16.4	17.6
Water Capacity (lb)	15.8	29.7	49.6
Diameter (in)	7.5	9.5	12
Cylinder Volume (CU. IN)	438	822	1,378
Standard Specification	DOT-39	DOT-39	DOT-39
Service Pressure (PSIG)	260 400	260 300 400	260 320
Test Pressure (PSIG)	325 500	325 400 500	325 400

All dimensions are approximate. Recommended service pressure is dependent on gas type.

FEATURES

- Rounded edges for safe handling
- Comfort grip for improved handling
- Arched design for light weight, enhanced durability and increased strength
- Wide 3.2" opening for easy valve access and filling



Shoulder



Collar



Valve

PRESSURE RELIEF DEVICES

All cylinders are made to DOT-39 specifications.

STAMPS OF AUTHENTICITY

Guaranteed Quality. Guaranteed Worthington.

CONTAINER COLOR GUIDELINES

Worthington's standard offering aligns with AHRI Guideline N, which states all refrigerant containers will be painted PMS 413.

Per SAE, containers with R-134a Automotive will remain PMS 2975.

Worthington offers a range of paint color options to meet your specific needs. Some examples include: PMS 352, PMS 021, PMS 471, PMS 507, PMS 326

CLASS A2L CYLINDERS

Worthington Enterprises is proud to introduce our complete line of Class A2L refrigerant cylinders. Our cylinders are designed with safety at top of mind, featuring left hand threads and a red stripe to signify their A2L designation.





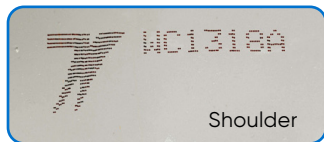
METRIC SPECIFICATIONS

Model/Size	7.5 INCH	9.5 INCH	12 INCH
Height (mm)	396.8	416.7	446
Water Capacity (kg)	7.04	13.2	22.1
Diameter (mm)	190.5	241.3	304.8
Cylinder Volume (L)	7.2	13.5	22.5
Standard Specification	DOT-39	DOT-39	DOT-39
Service Pressure (BAR)	179 27.6	179 20.7 27.6	179 22.1
Test Pressure (BAR)	23 34.5	23 27.6 34.5	23 27.6

All dimensions are approximate. Recommended service pressure is dependent on gas type.

FEATURES

- Rounded edges for safe handling
- Comfort grip for improved handling
- Arched design for light weight, enhanced durability and increased strength
- Wide 3.2" opening for easy valve access and filling



Shoulder



Collar



Valve

PRESSURE RELIEF DEVICES

All cylinders are made to DOT-39 specifications.

STAMPS OF AUTHENTICITY

Guaranteed Quality. Guaranteed Worthington.

CONTAINER COLOR GUIDELINES

Worthington's standard offering aligns with AHRI Guideline N, which states all refrigerant containers will be painted PMS 413.

Per SAE, containers with R-134a Automotive will remain PMS 2975.

Worthington offers a range of paint color options to meet your specific needs. Some examples include: PMS 352, PMS 021, PMS 471, PMS 507, PMS 326

CLASS A2L CYLINDERS

Worthington Enterprises is proud to introduce our complete line of Class A2L refrigerant cylinders. Our cylinders are designed with safety at top of mind, featuring left hand threads and a red stripe to signify their A2L designation.

