



STANDARD SPECIFICATIONS

| Model | 7.5 INCH | 9.5 INCH | 12 INCH |
|-------------------------------|---------------|-----------------|---------------|
| Height (in) | 14.6 | 16.4 | 17.6 |
| Water Capacity (lb) | 15.8 | 29.7 | 49.6 |
| Diameter (in) | 7.5 | 9.5 | 12 |
| Cylinder Volume (CU. IN) | 438 | 822 | 1,378 |
| Standard Specification | DOT-39 | DOT-39 | DOT-39 |
| Service Pressure (PSIG) | 260 400 | 260 300 400 | 260 320 |
| Test Pressure (PSIG) | 325 500 | 325 400 500 | 325 400 |

All dimensions are approximate.
Recommended service pressure is dependent on gas type.



FEATURES

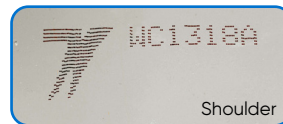
- Rounded edges for safe handling
- Comfort grip for improved handling
- Arched design for light weight, enhanced durability and increased strength
- Wide 3.2" opening for easy valve access and filling

PRESSURE RELIEF DEVICES

All cylinders are made to DOT-39 specifications.

STAMPS OF AUTHENTICITY

Guaranteed Quality. Guaranteed Worthington.



CONTAINER COLOR GUIDELINES

Worthington complies with AHRI Guideline N, which states all refrigerant containers will be painted PMS 413. Per SAE, containers with R-134a Automotive will remain PMS 2975. Containers with flammable refrigerant will have a red band on the shoulder.





METRIC SPECIFICATIONS

| Model | 7.5 INCH | 9.5 INCH | 12 INCH |
|-------------------------------|---------------|--------------------|---------------|
| Height (mm) | 396.8 | 416.7 | 446 |
| Water Capacity (kg) | 7.04 | 13.2 | 22.1 |
| Diameter (mm) | 190.5 | 241.3 | 304.8 |
| Cylinder Volume (L) | 7.2 | 13.5 | 22.5 |
| Standard Specification | DOT-39 | DOT-39 | DOT-39 |
| Service Pressure (BAR) | 17.9 27.6 | 17.9 20.7 27.6 | 17.9 22.1 |
| Test Pressure (BAR) | 23 34.5 | 23 27.6 34.5 | 23 27.6 |

All dimensions are approximate.
Recommended service pressure is dependent on gas type.



FEATURES

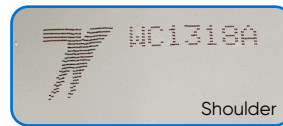
- Rounded edges for safe handling
- Comfort grip for improved handling
- Arched design for light weight, enhanced durability and increased strength
- Wide 3.2" opening for easy valve access and filling

PRESSURE RELIEF DEVICES

All cylinders are made to DOT-39 specifications.

STAMPS OF AUTHENTICITY

Guaranteed Quality. Guaranteed Worthington.



CONTAINER COLOR GUIDELINES

Worthington complies with AHRI Guideline N, which states all refrigerant containers will be painted PMS 413. Per SAE, containers with R-134a Automotive will remain PMS 2975. Containers with flammable refrigerant will have a red band on the shoulder.

